

EANS/UEMS European examination in neurosurgery

Part I (written)

Variants of questions with answers (compilation - Vyacheslav S. Botev,
Department of Neurosurgery, M.Gorky Donetsk National Medical University)

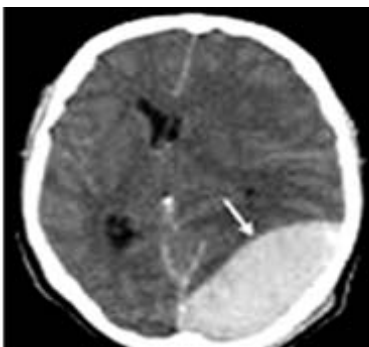
Neuroradiology

Identify the lesions.

Report the following X-ray, CT and MRI.

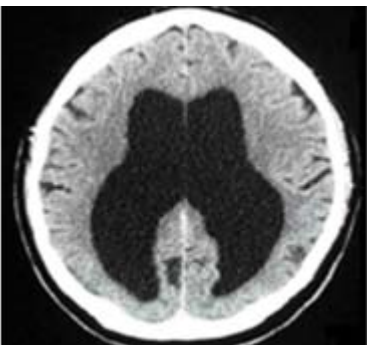
Don't panic, just say what you see.

1.



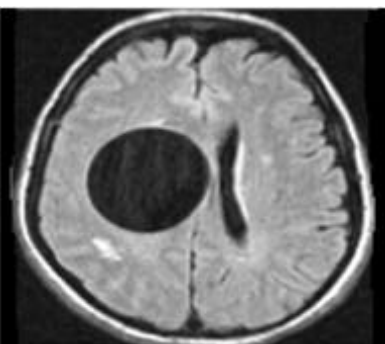
- A. Meningioma
- B. Cerebral metastasis
- C. Subdural hematoma
- D. Epidural hematoma
- E. Intracranial aneurysm

2.



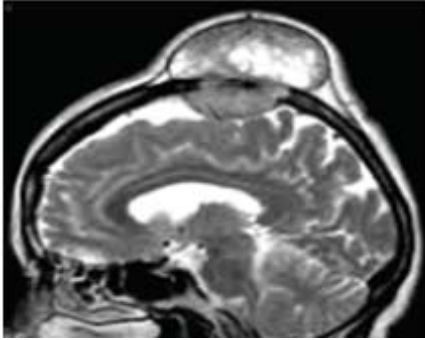
- A. "Butterfly" glioma
- B. Parkinson's disease
- C. Alzheimer's disease
- D. Multi-infarct dementia
- E. Normal pressure hydrocephalus

3.



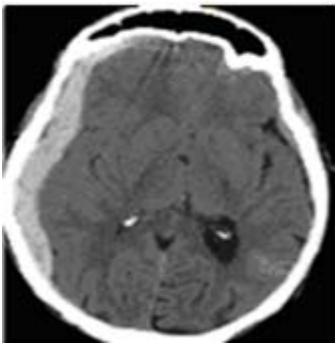
- A. Abscess
- B. Hydatid cyst
- C. Arachnoid cyst
- D. Hydrocephalus
- E. Tension pneumocephalus

4.



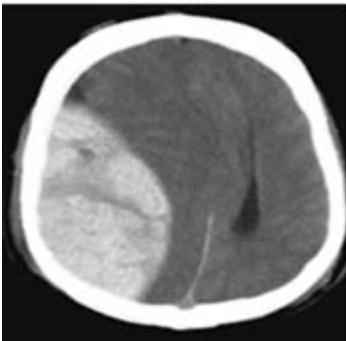
- A. Hemangioma
- B. Paget's disease
- C. Fibrous dysplasia
- D. Multiple myeloma
- E. Eosinophilic granuloma

5.



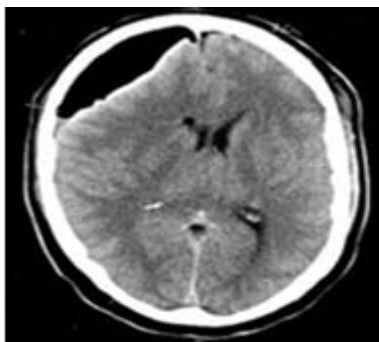
- A. Ischemic stroke
- B. Epidural hematoma
- C. Subdural hematoma
- D. Hemorrhagic stroke
- E. Subarachnoid hemorrhage

6.



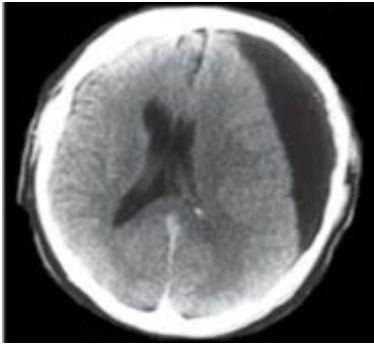
- A. Meningioma
- B. Hemangioma
- C. Epidural hematoma
- D. Hemorrhagic stroke
- E. Subdural hematoma

7.



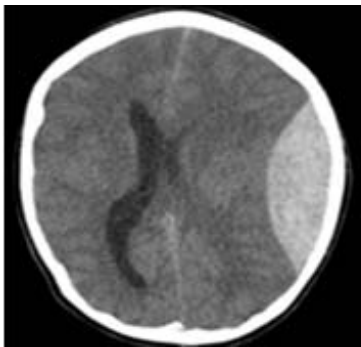
- A. Abscess
- B. Arachnoid cyst
- C. Ischemic stroke
- D. Subdural hematoma
- E. Tension pneumocephalus

8.



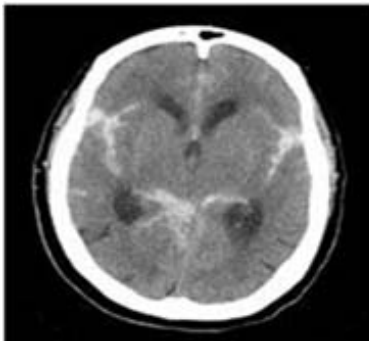
- A. Epidural hematoma
- B. Diffuse axonal injury
- C. Tension pneumocephalus
- D. Acute subdural hematoma
- E. Chronic subdural hematoma

9.



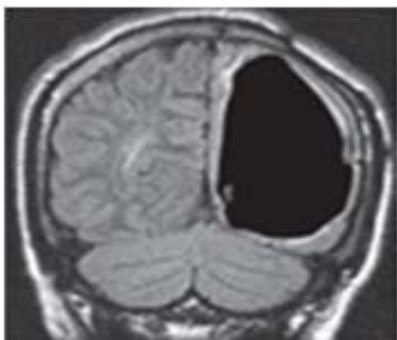
- A. Ruptured AVM
- B. Epidural hematoma
- C. Ruptured berry aneurysm
- D. Tension pneumocephalus
- E. Acute subdural hematoma

10.



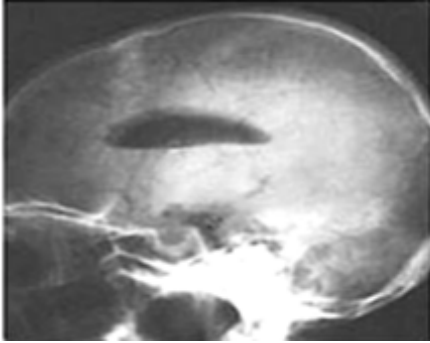
- A. Diffuse axonal injury
- B. Extradural hemorrhage
- C. Tension pneumocephalus
- D. Subarachnoid hemorrhage
- E. Acute subdural hemorrhage

11.



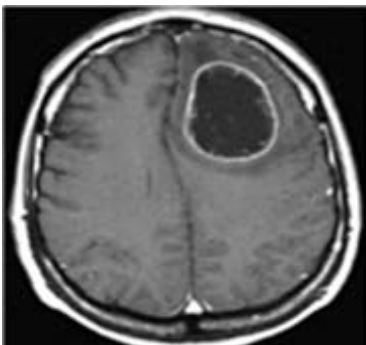
- A. Abscess
- B. Hydatid cyst
- C. Arachnoid cyst
- D. Hydrocephalus
- E. Tension pneumocephalus

12.



- A. Hydatid cyst
- B. Arachnoid cyst
- C. Hydrocephalus
- D. Ischemic stroke
- E. Traumatic pneumocephalus

13.



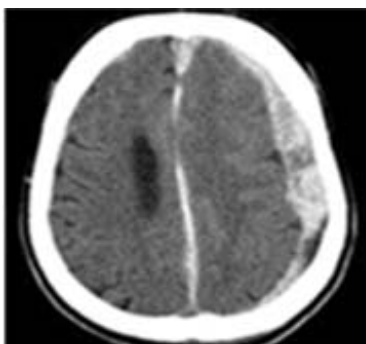
- A. Hydrocephalus
- B. Arachnoid cyst
- C. Ischemic stroke
- D. Cerebral abscess
- E. Chronic subdural hematoma

14.



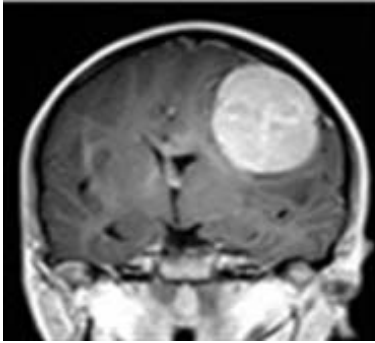
- A. Hydrocephalus
- B. Arachnoid cyst
- C. Ischemic stroke
- D. Tension pneumocephalus
- E. Chronic subdural hematoma

15.



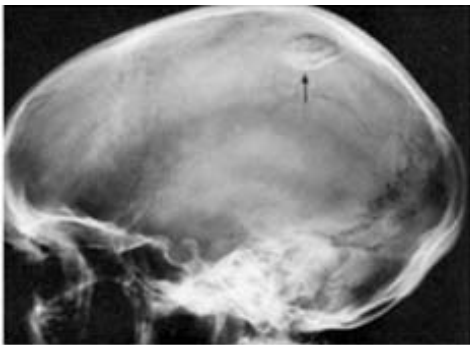
- A. Ischemic stroke
- B. Epidural hematoma
- C. Subdural hematoma
- D. Hemorrhagic stroke
- E. Subarachnoid hemorrhage

16.



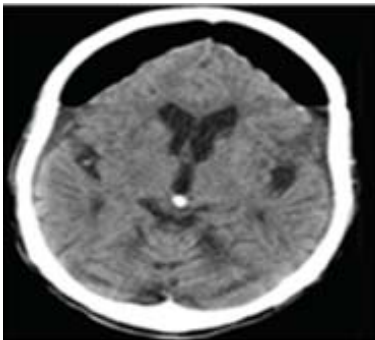
- A. Meningioma
- B. Cerebral abscess
- C. Oligodendroglioma
- D. Low-grade astrocytoma
- E. Glioblastoma multiforme

17.



- A. Hinge fracture
- B. Le Fort fracture
- C. Blowout fracture
- D. Basilar skull fracture
- E. Depressed skull fracture

18.



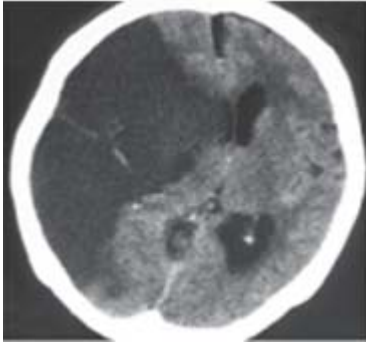
- A. Ruptured AVM
- B. Epidural hematoma
- C. Ruptured berry aneurysm
- D. Tension pneumocephalus
- E. Acute subdural hematoma

19.



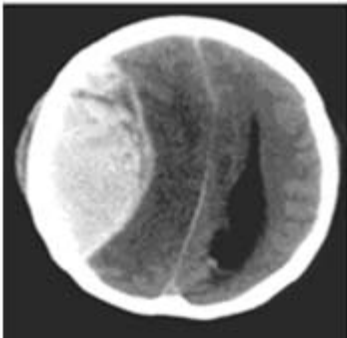
- A. Cerebral contusion
- B. Epidural hematoma
- C. Subdural hematoma
- D. Subarachnoid hemorrhage
- E. Intraventricular hematoma

20.



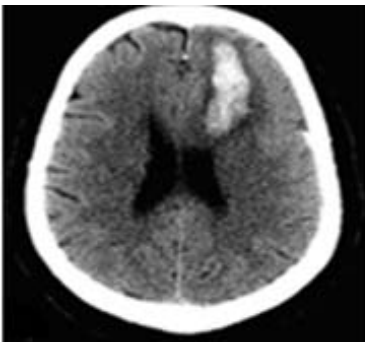
- A. Arachnoid cyst
- B. Intracerebral hematoma
- C. Tension pneumocephalus
- D. Chronic subdural hematoma
- E. Acute right MCA territory infarct

21.



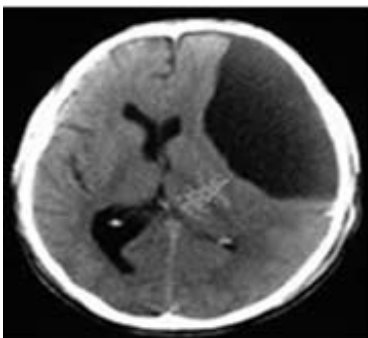
- A. Meningioma
- B. Ruptured AVM
- C. Epidural hematoma
- D. Subdural hematoma
- E. Ruptured berry aneurysm

22.



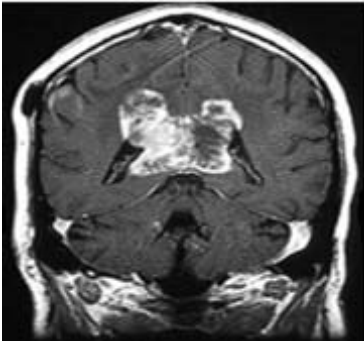
- A. Cerebral contusion
- B. Subdural hematoma
- C. Epidural hematoma
- D. Intracerebral hematoma
- E. Subarachnoid hemorrhage

23.



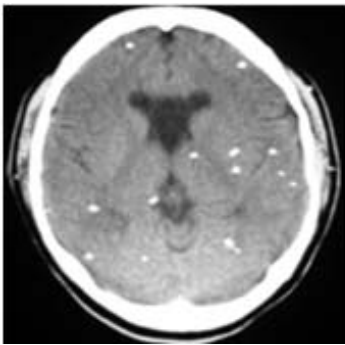
- A. Abscess
- B. Hydatid cyst
- C. Arachnoid cyst
- D. Hydrocephalus
- E. Tension pneumocephalus

24.



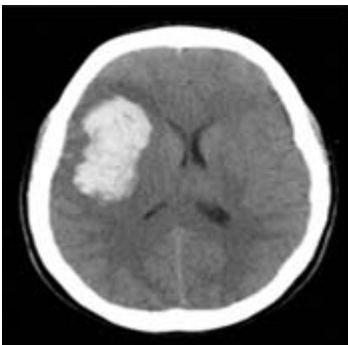
- A. Meningioma
- B. Cerebral abscess
- C. "Butterfly" glioma
- D. Cerebral contusion
- E. Intracerebral hematoma

25.



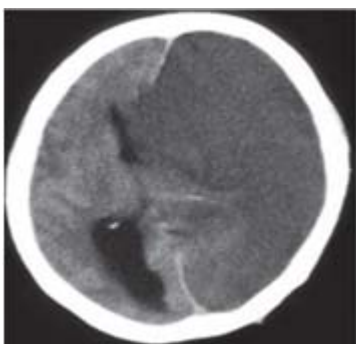
- A. Brain metastases
- B. Radiation change
- C. Multiple sclerosis
- D. Cerebral abscesses
- E. Neurocysticercosis

26.



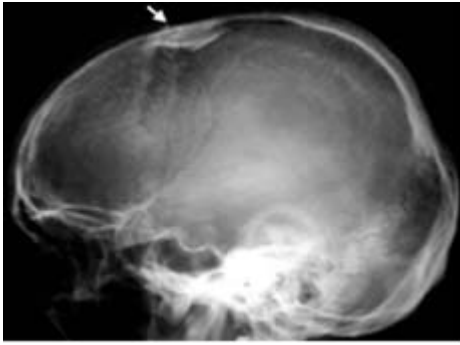
- A. Meningioma
- B. Cerebral abscess
- C. Brain metastasis
- D. Radiation change
- E. Intracerebral hematoma

27.



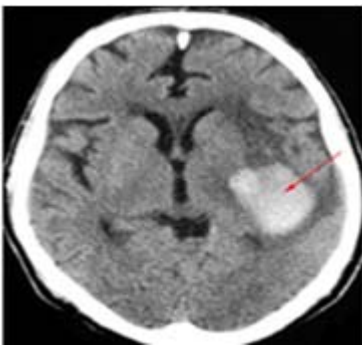
- A. Arachnoid cyst
- B. Intracerebral hematoma
- C. Tension pneumocephalus
- D. Chronic subdural hematoma
- E. Acute left MCA territory infarct

28.



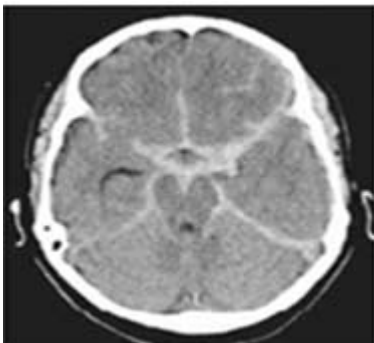
- A. Linear fracture
- B. Le Fort fracture
- C. Blowout fracture
- D. Comminuted fracture
- E. Depressed skull fracture

29.



- A. Meningioma
- B. Cerebral abscess
- C. Brain metastasis
- D. Radiation change
- E. Intracerebral hematoma

30.



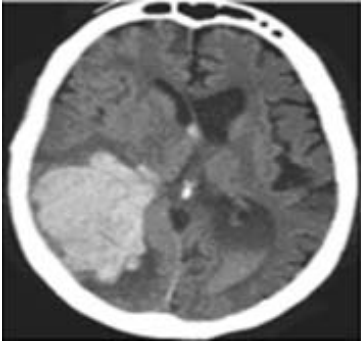
- A. Cerebral contusion
- B. Subdural hematoma
- C. Epidural hematoma
- D. Intracerebral hematoma
- E. Subarachnoid hemorrhage

31.



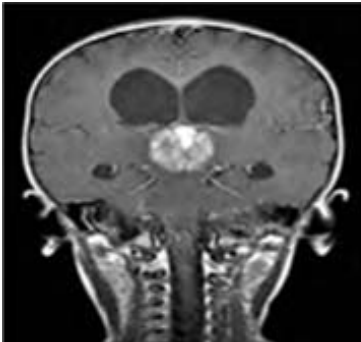
- A. Linear fracture
- B. Le Fort fracture
- C. Blowout fracture
- D. Comminuted fracture
- E. Depressed skull fracture

32.



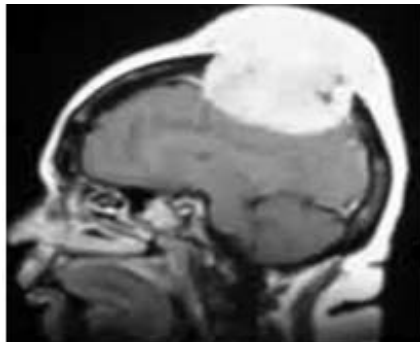
- A. Meningioma
- B. Cerebral abscess
- C. Radiation change
- D. “Butterfly” glioma
- E. Amyloid angiopathy

33.



- A. Pineal tumor
- B. Thalamic glioma
- C. Aneurysm of the ICA
- D. Choroid plexus papilloma
- E. Vein of Galen malformation

34.



- A. Meningioma
- B. Cerebral abscess
- C. Oligodendroglioma
- D. Low-grade astrocytoma
- E. Glioblastoma multiforme

35.



- A. Meningioma
- B. Radiation change
- C. Cerebral abscesses
- D. Primary CNS lymphoma
- E. Glioblastoma multiforme

36.



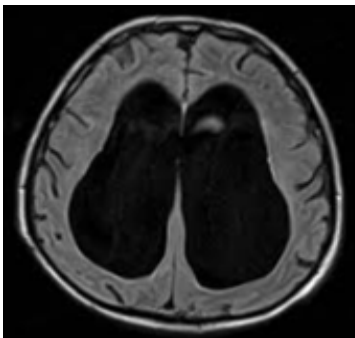
- A. Abscess
- B. Hydatid cyst
- C. Arachnoid cyst
- D. Hydrocephalus
- E. Tension pneumocephalus

37.



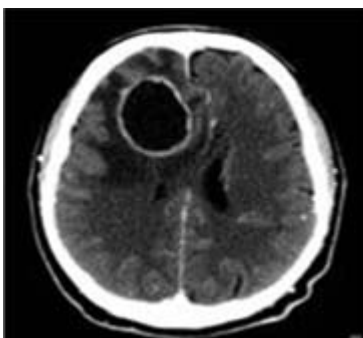
- A. Linear fracture
- B. Le Fort fracture
- C. Blowout fracture
- D. Comminuted fracture
- E. Depressed skull fracture

38.



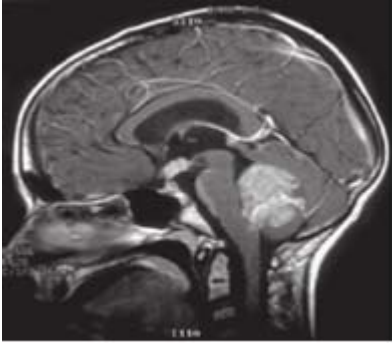
- A. Hydatid cyst
- B. Hydrocephalus
- C. Arachnoid cyst
- D. "Butterfly" glioma
- E. Tension pneumocephalus

39.



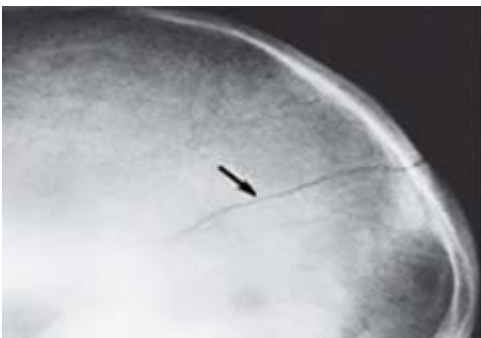
- A. Hydrocephalus
- B. Arachnoid cyst
- C. Ischemic stroke
- D. Cerebral abscess
- E. Chronic subdural hematoma

40.



- A. Meningioma
- B. Ependymoma
- C. Radiation change
- D. Medulloblastoma
- E. Brain stem glioma

41.



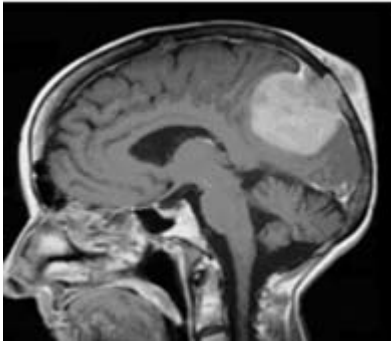
- A. Linear fracture
- B. Le Fort fracture
- C. Blowout fracture
- D. Comminuted fracture
- E. Depressed skull fracture

42.



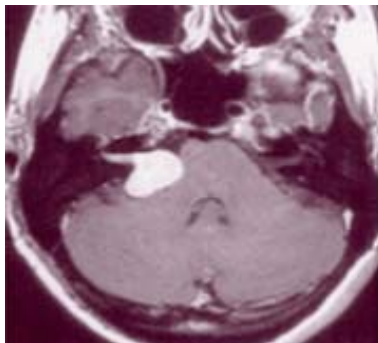
- A. Tuberculosis
- B. Radiation change
- C. Multiple myeloma
- D. Eosinophilic granuloma
- E. Prostate carcinoma mets

43.



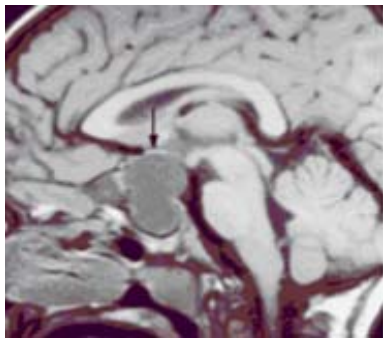
- A. Meningioma
- B. Cerebral abscess
- C. Craniopharyngioma
- D. Low-grade astrocytoma
- E. Glioblastoma multiforme

44.



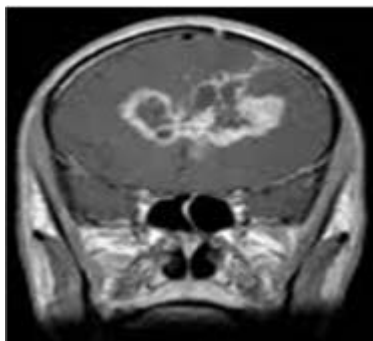
- A. Meningioma
- B. Cerebral abscess
- C. Craniopharyngioma
- D. Acoustic Schwannoma
- E. Glioblastoma multiforme

45.



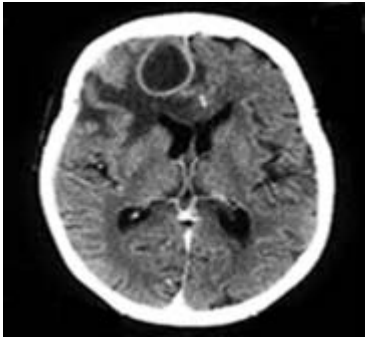
- A. Meningioma
- B. Cerebral abscess
- C. Craniopharyngioma
- D. Acoustic Schwannoma
- E. Glioblastoma multiforme

46.



- A. Meningioma
- B. Radiation change
- C. Cerebral abscess
- D. Acoustic Schwannoma
- E. Primary CNS lymphoma

47.



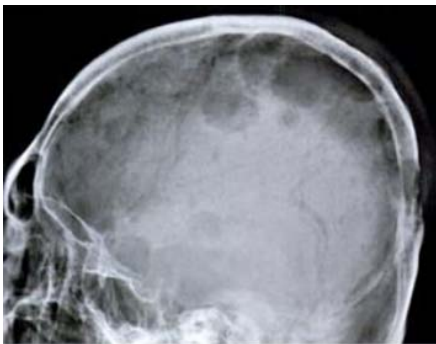
- A. Abscess
- B. Hydatid cyst
- C. Arachnoid cyst
- D. Hydrocephalus
- E. Tension pneumocephalus

48.



- A. Hemangioma
- B. Paget's disease
- C. Fibrous dysplasia
- D. Multiple myeloma
- E. Eosinophilic granuloma

49.



- A. Hemangioma
- B. Paget's disease
- C. Radiation change
- D. Fibrous dysplasia
- E. Multiple myeloma

50.



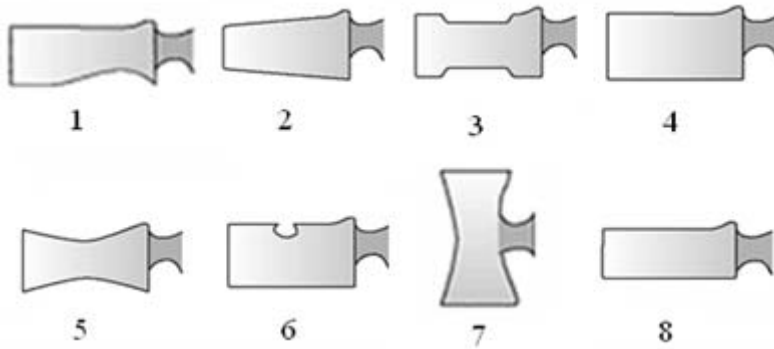
- A. Osteoma
- B. Tuberculosis
- C. Osteomyelitis
- D. Hemangioblastoma
- E. Breast carcinoma mets

51.



- A. Metastasis
- B. Osteomyelitis
- C. Hemangioma
- D. Radiation change
- E. Fibrous dysplasia

52. Which of the following vertebrae are shown below?



- A. H vertebra
- B. Ivory vertebra
- C. Schmorl node
- D. "Dog" vertebra
- E. "Fish" vertebra
- F. Wedge vertebra
- G. Normal vertebra
- H. Pancake vertebra
- I. Butterfly vertebra
- J. Scalloped vertebra
- K. Hamburger vertebra
- L. Cupid's bow vertebra
- M. Picture frame vertebra

Answers

1. D. Epidural hematoma
2. E. Normal pressure hydrocephalus
3. B. Hydatid cyst
4. E. Eosinophilic granuloma
5. C. Subdural hematoma
6. C. Epidural hematoma
7. A. Tension pneumocephalus
8. E. Chronic subdural hematoma
9. B. Epidural hematoma
10. D. Subarachnoid hemorrhage
11. C. Arachnoid cyst
12. E. Traumatic pneumocephalus
13. D. Cerebral abscess
14. E. Chronic subdural hematoma
15. C. Subdural hematoma
16. A. Meningioma
17. E. Depressed skull fracture
18. D. Tension pneumocephalus
19. E. Intraventricular hematoma
20. E. Acute right MCA territory infarct
21. C. Epidural hematoma
22. D. Intracerebral hematoma
23. C. Arachnoid cyst
24. C. "Butterfly" glioma
25. E. Neurocysticercosis
26. E. Intracerebral hematoma
27. E. Acute left MCA territory infarct
28. E. Depressed skull fracture
29. E. Intracerebral hematoma
30. E. Subarachnoid hemorrhage
31. A. Linear fracture
32. E. Amyloid angiopathy
33. A. Pineal tumor
34. A. Meningioma
35. D. Primary CNS lymphoma
36. C. Arachnoid cyst

- 37. D. Comminuted fracture
- 38. B. Hydrocephalus
- 39. D. Cerebral abscess
- 40. D. Medulloblastoma
- 41. A. Linear fracture
- 42. E. Prostate carcinoma mets
- 43. A. Meningioma
- 44. D. Acoustic Schwannoma
- 45. C. Craniopharyngioma
- 46. E. Primary CNS lymphoma
- 47. A. Abscess
- 48. E. Eosinophilic granuloma
- 49. E. Multiple myeloma
- 50. E. Breast carcinoma mets.
- 51. C. Hemangioma
- 52.
- 1 - L. Cupid's bow vertebra
- 2 - F. Wedge vertebra
- 3 - A. H vertebra
- 4 - G. Normal vertebra
- 5 - E. "Fish" vertebra
- 6 - C. Schmorl node
- 7 - D. "Dog" vertebra
- 8 - H. Pancake vertebra